



Sheffield
General
Cemetery
Trust



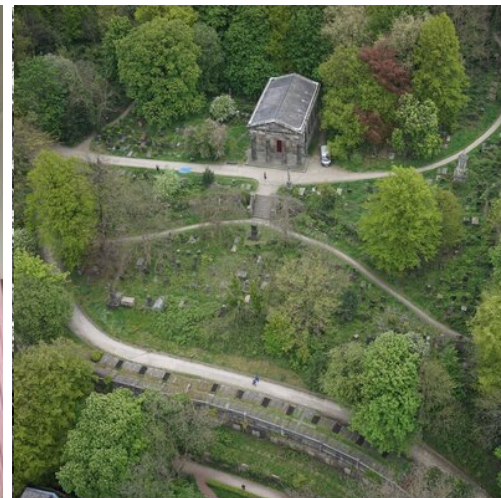
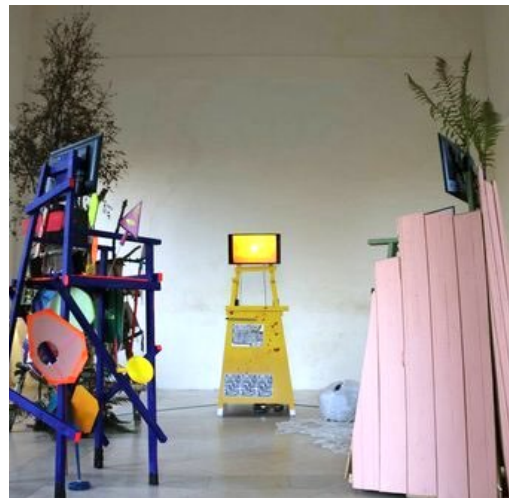
The Samuel Worth Chapel

The Samuel Worth Chapel

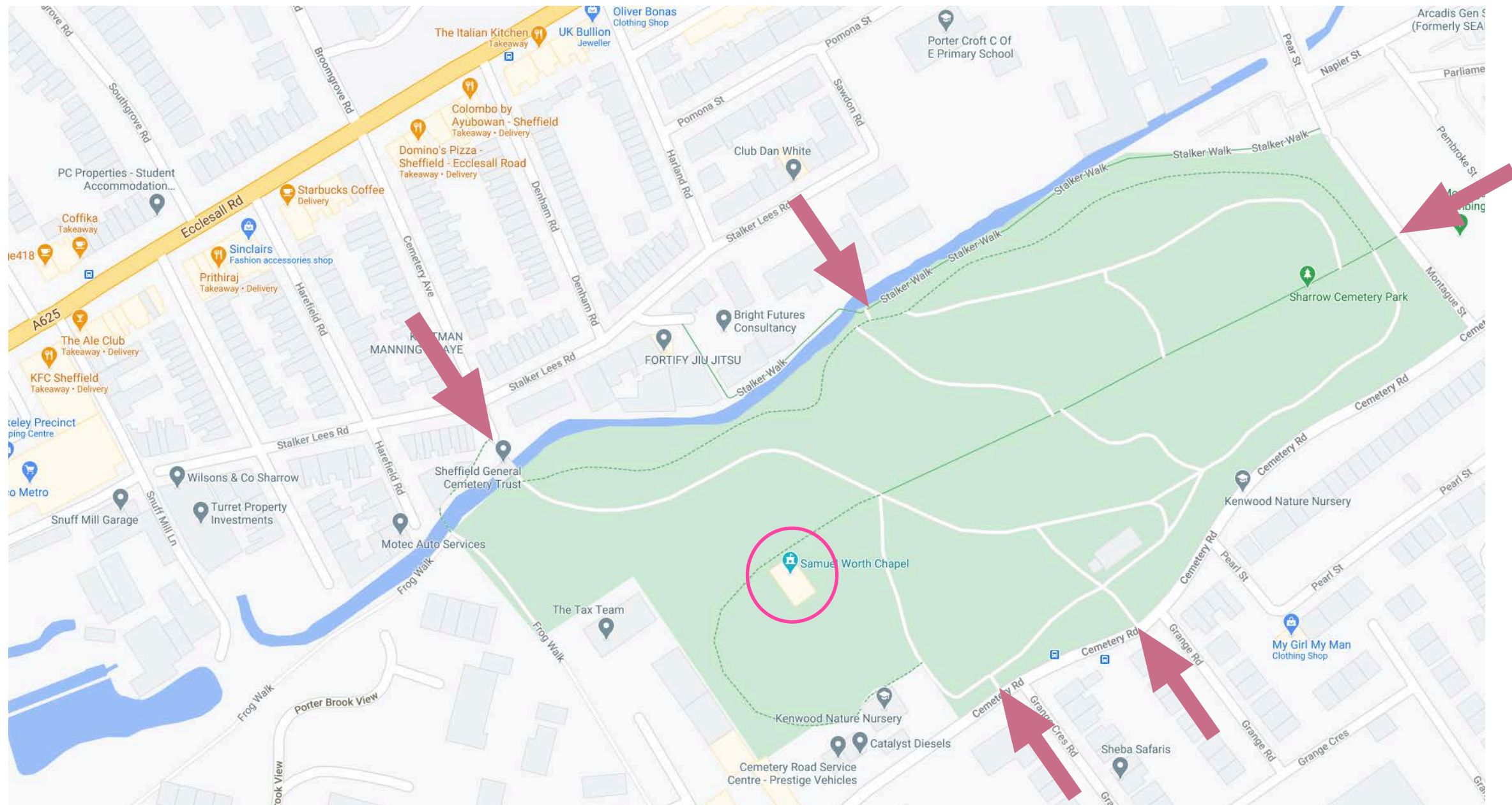
Event Space

The Samuel Worth Chapel is a beautiful and intimate venue set in the heart of our nature reserve and historic cemetery. Designed by Samuel Worth in 1836, the building was completely restored in 2016 winning a Georgian Group Award for its restoration. It's grand entrance leads you into a simple and elegant interior, flooded with natural light. The space allows for concerts, conferences, lectures, workshops exhibitions and film screenings and weddings.

The adjacent green space with wild flowers and lawned area gives you the opportunity to host outdoor activities and celebrate outside.



The Samuel Worth Chapel Location



➡ Cemetery Entrances

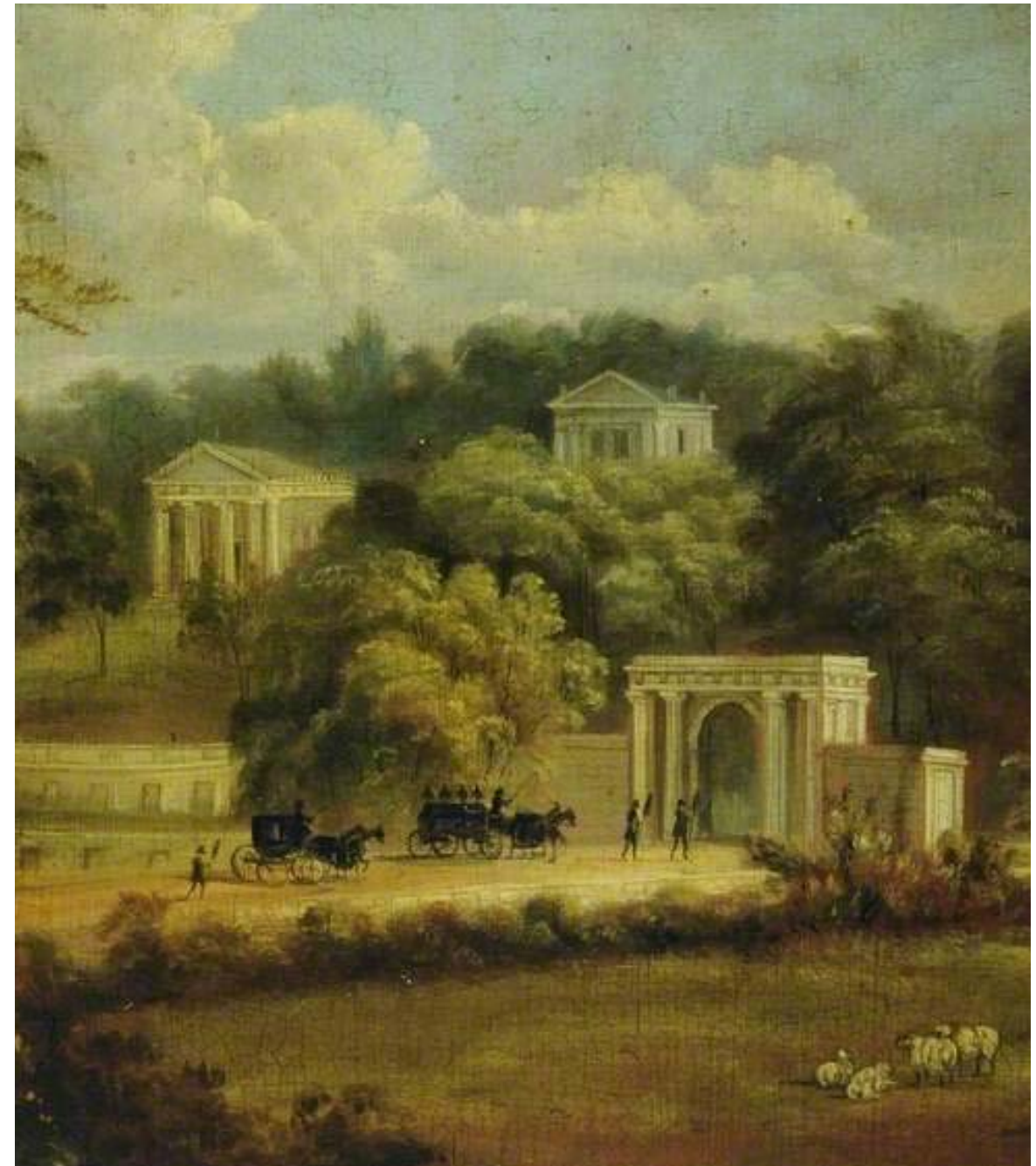
A Short History of Sheffield General Cemetery

The Cemetery was opened in 1836, one of the first private cemetery companies in England. Sheffield's fast growing population in dangerous industries and insanitary conditions led to church graveyards becoming full and Sheffielders seized the opportunity to lay out an impressive new privately owned and financed cemetery in the 'remote and undisturbed' Porter Valley.

As one of the first private cemeteries in England and thanks to its position on the steep south side of the then picturesque valley, the owners and architects wanted to make an impression. The Cemetery was visible from the newly built Botanical Gardens, and from the mansions of the City's leading citizens who lived on the opposite side of the valley. You can still see the layout and buildings of the original Nonconformist part of the Cemetery pretty much as they were then, though it was not until around 1850 that the Cemetery became profitable, after the Anglican part was added making a total of 13 acres.

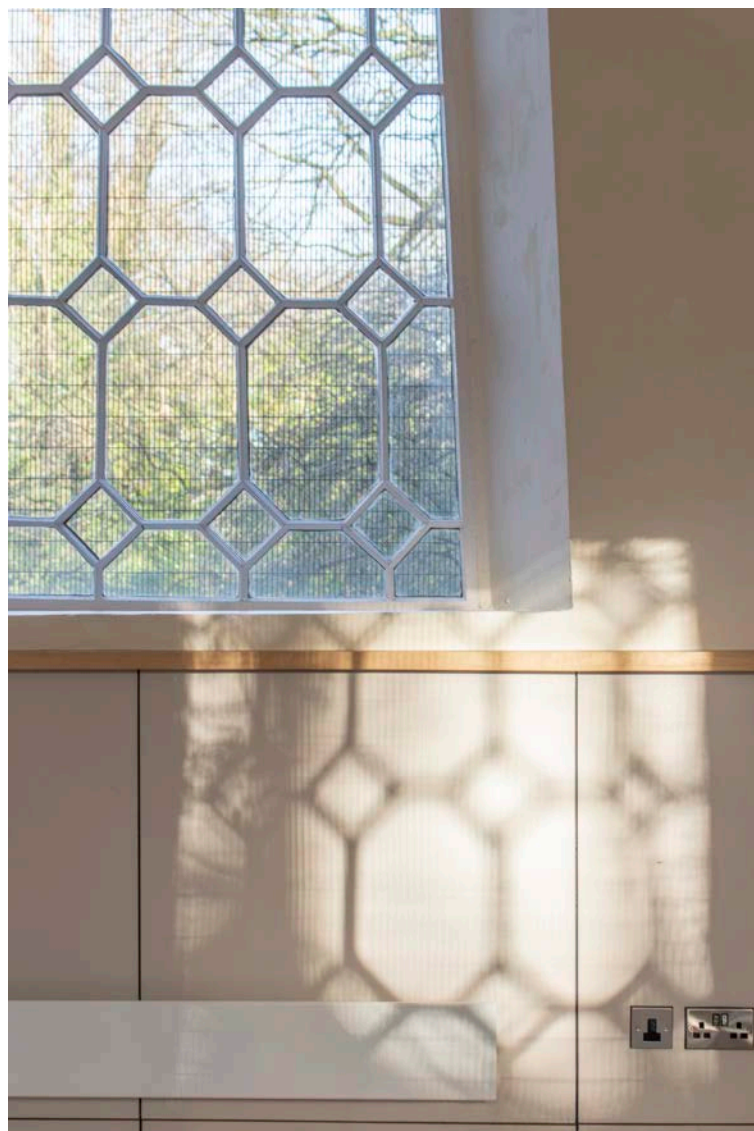
By 1900 the Cemetery was filling up and after the First World War burials declined in popularity. By the mid-1900s the Cemetery was little used and the land and buildings became overgrown and derelict. Sheffield City Council purchased the site in the 1970's to save it from further decay and to create an area of much needed public open space for the inner city. Paths were opened up and most of the Anglican gravestones removed to create the parkland area. The spire of the unused Anglican Chapel (not controlled by the Trust) is still a feature of the skyline. The Gatehouse was restored by the Trust in 2002 and the Samuel Worth Chapel in 2016.

Working with the National Lottery Heritage Fund and in consultation with the Trust, the City Council began another major programme of work in 2020 so that essential structural repairs and landscape improvements should safeguard the Cemetery Heritage Park for the next 100 years. To ensure this capital investment is not wasted, the Trust's small team of staff and volunteers is needed more than ever to keep the site attractive and safe for visitors and to ensure that the Cemetery remains a special place close to the heart of Sheffield.



A Unique Space





East Wall



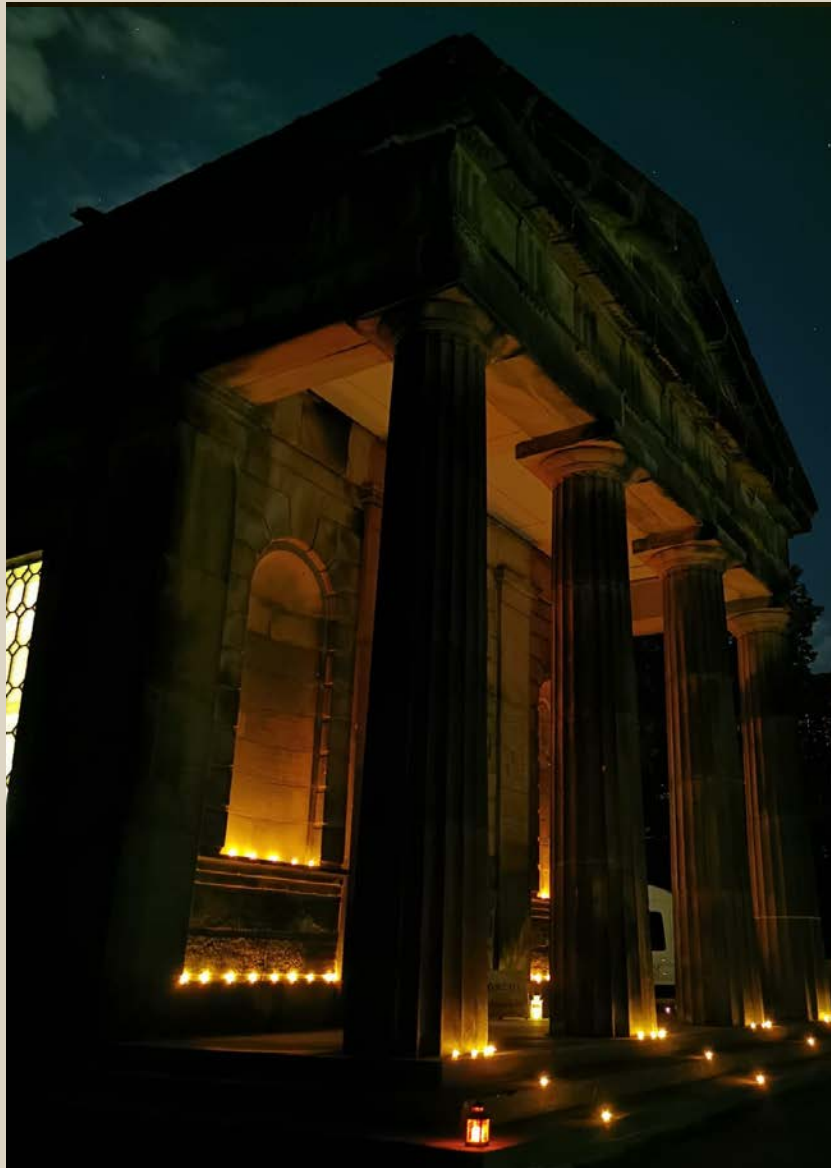
East Wall

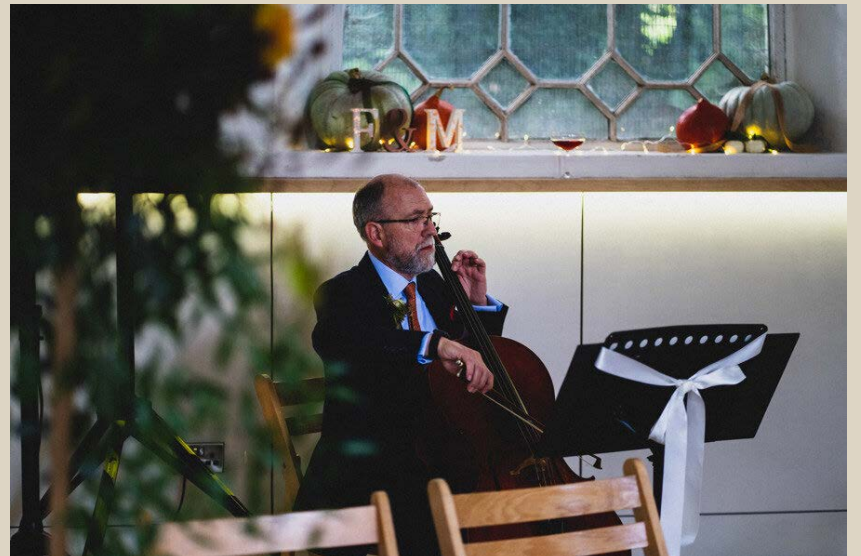


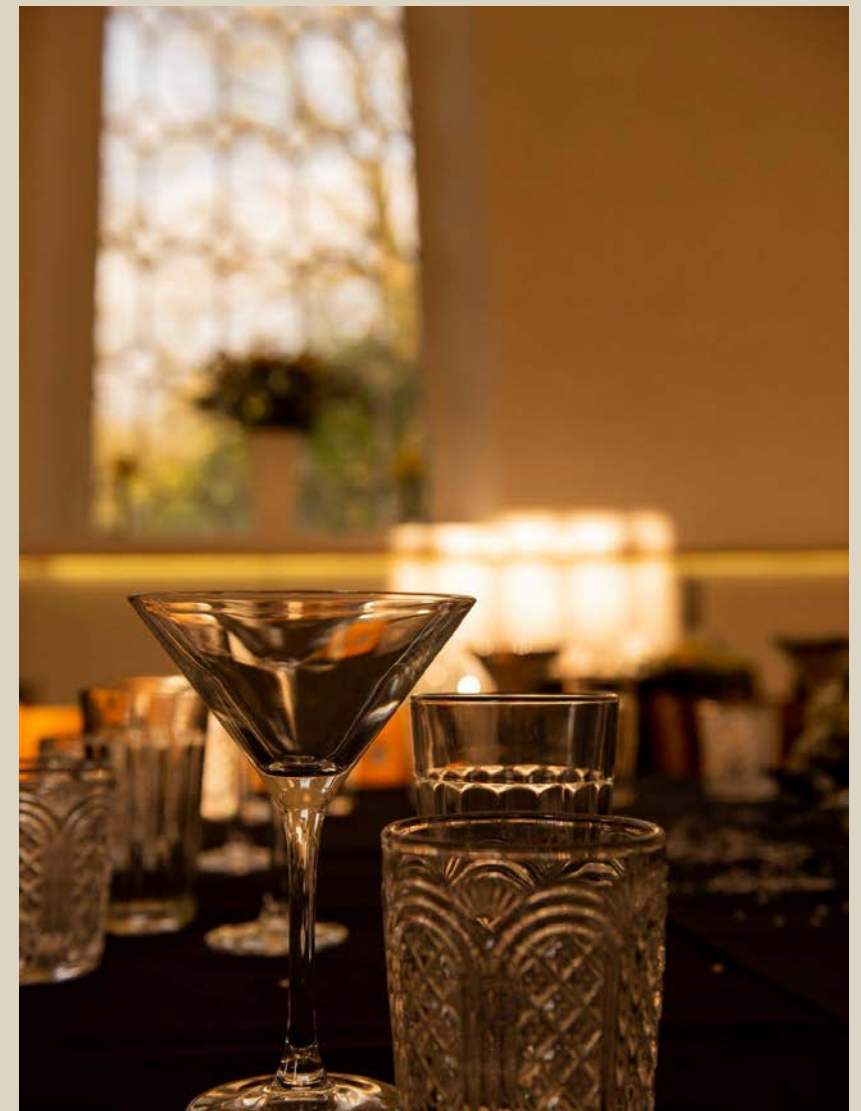
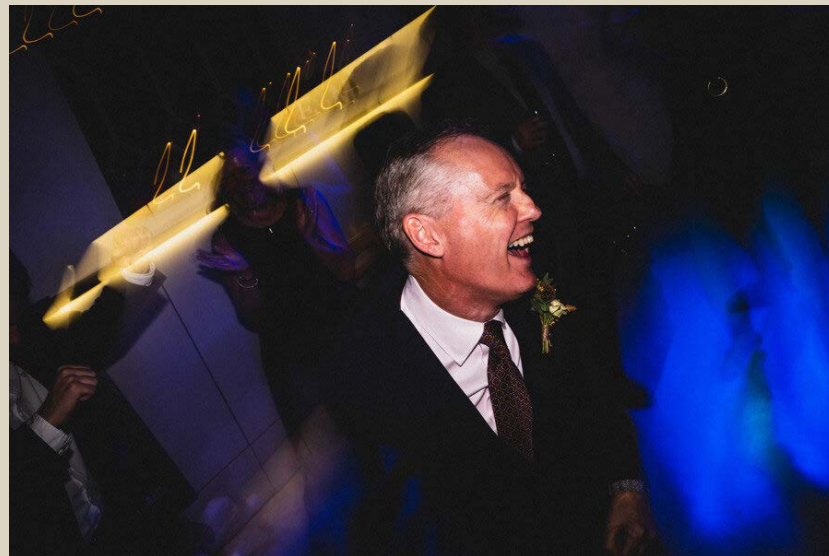
West Wall



South and East Walls







Exhibition, Music & Performance



SNAPPED ANKLES

FRIDAY 17TH AUGUST 19:00

SAMUEL WORTH CHAPEL
SHEFFIELD GENERAL CEMETERY

TICKETS AT PARTYFORTHEPEOPLE.ORG £8/£10

WAXY BLOCKS
f waxyblockssheffield
i waxyblocks

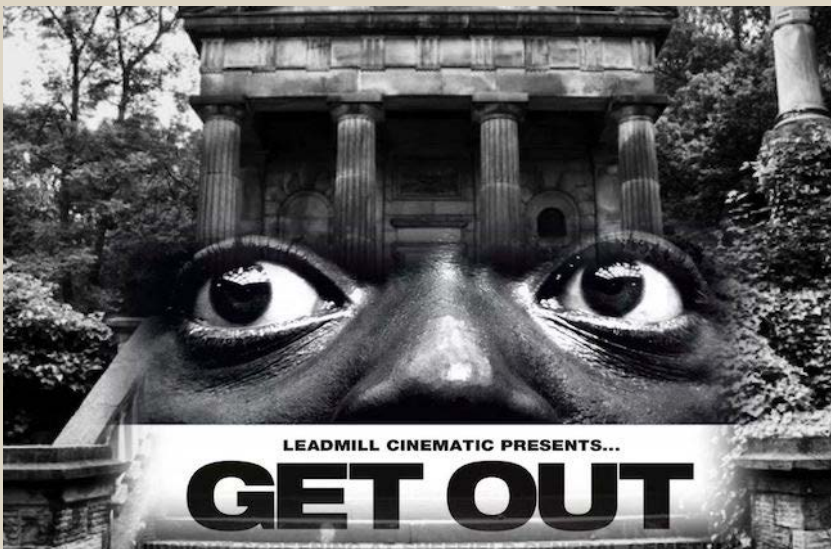


Photo & Film Location

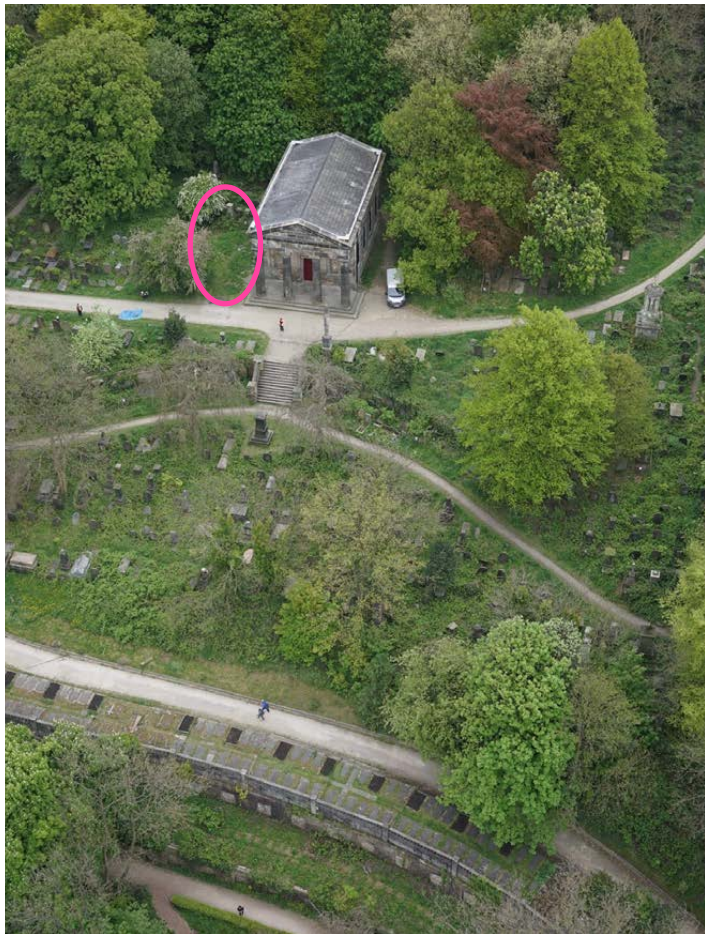


Chapel Facilities

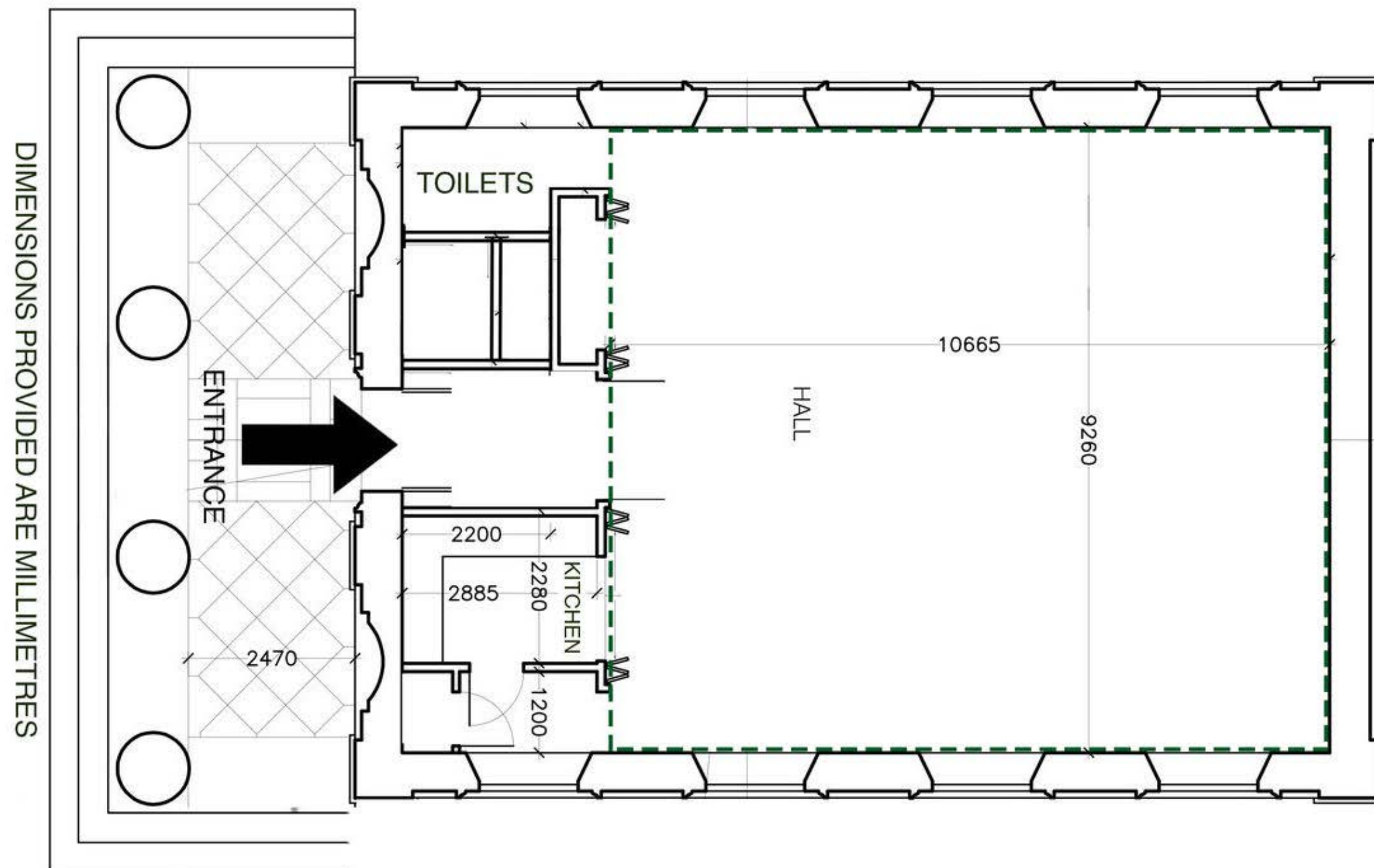


North Wall

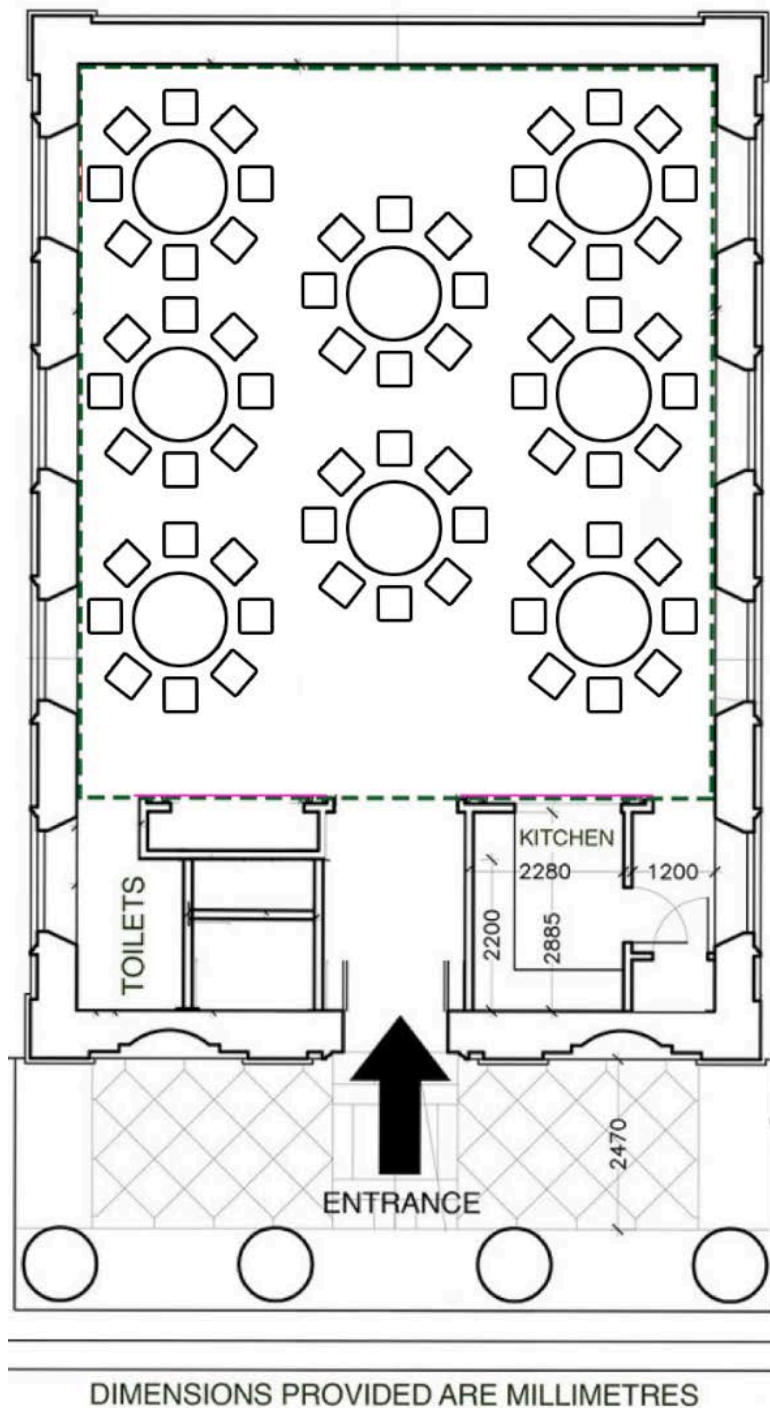
Lawn Area



Chapel Floor Plan



Tables & Chairs



Items provided as part of your hire:



8 × 1200mm Round Tables



2 × 600mm × 1200 Rectangular Tables



80 × Folding Plastic Chairs

Interested?

Contact us to discuss your event ideas!

Email Emma for more information and to arrange
a call, Zoom or an in-person viewing.

Emma.Larsson-Revitt@gencem.org





Thank You.

Contact us:

W: gencem.org
E: sgct@gencem.org
T: 0114 268 3486